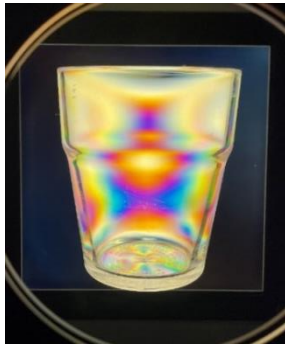


## ■ Polariscope – About visual performance

### ■ Examples of how it looks

Resin Cup



Inspection Method:  
Circularly Polarizing Light Method

### ★About Polariscope

Internal stress is applied to glass and plastic products. The internal stress is losing its balance and called strain. It is invisible to the eye and causes damage. Polariscope can “visualize” their invisible internal stress. You can control product quality.

Glasses



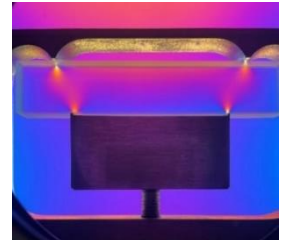
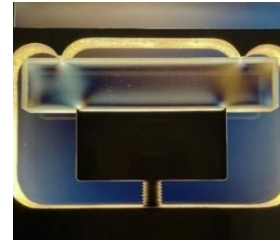
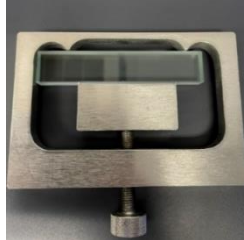
Inspection Method:  
Sensitive Color Method

Resin Smart Phone Cover



Inspection Method:  
Circularly Polarizing Light Method

Glass Rod(Four Point Bending)



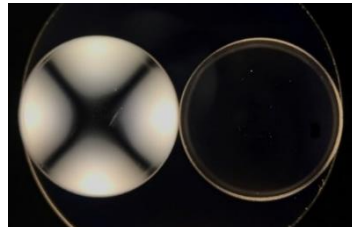
Inspection Method:  
Circularly Polarizing Light Method Sensitive Color Method

### ■ Evaluation cases

Glass Lens



left: before annealing  
right: after annealing



Inspection Method:  
Crossed Nicols Method

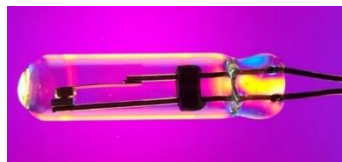
Resin Container



Inspection Method:  
Circularly Polarizing Light Method

Inspection Method:  
Sensitive Color Method

Glass lamp



Inspection Method:  
Sensitive Color Method

## ■ Polariscope Line-up

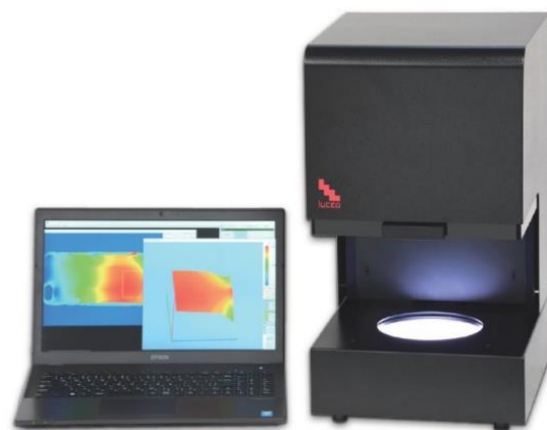
StrainEye  
< Visual >



Semiauto Senarmont  
< Semi-Automated >



Fullauto StrainEye  
< Fully-Automated >



## ■ application examples

large float glass plate	thermistor	flask	evaporating dish	optical glass element
automotive glass	prism	beaker	watch glass	glass container
industrial new material glass	various types of lamps	test tube	crystal	resin plate
optical new material glass	vacuum tube	connecting tubule	Quartz	resin film
glass wafer	gas-enclosing tube	analysis component	lens glass material	mold injection resin products

We also have a sample measurement service.  
Please feel free to contact us.

株式会社 ルケオ  luceo co.,ltd.

30-9 Ohyamakanai-cho, Itabashi-ku, Tokyo, 173-0024  
TEL +81-3-3956-4111 FAX +81-3-3956-2335  
URL <https://www.luceo.jp/>